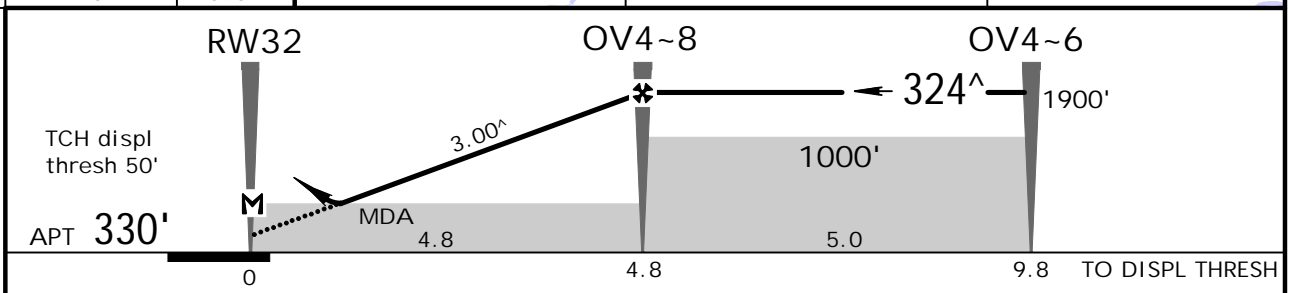
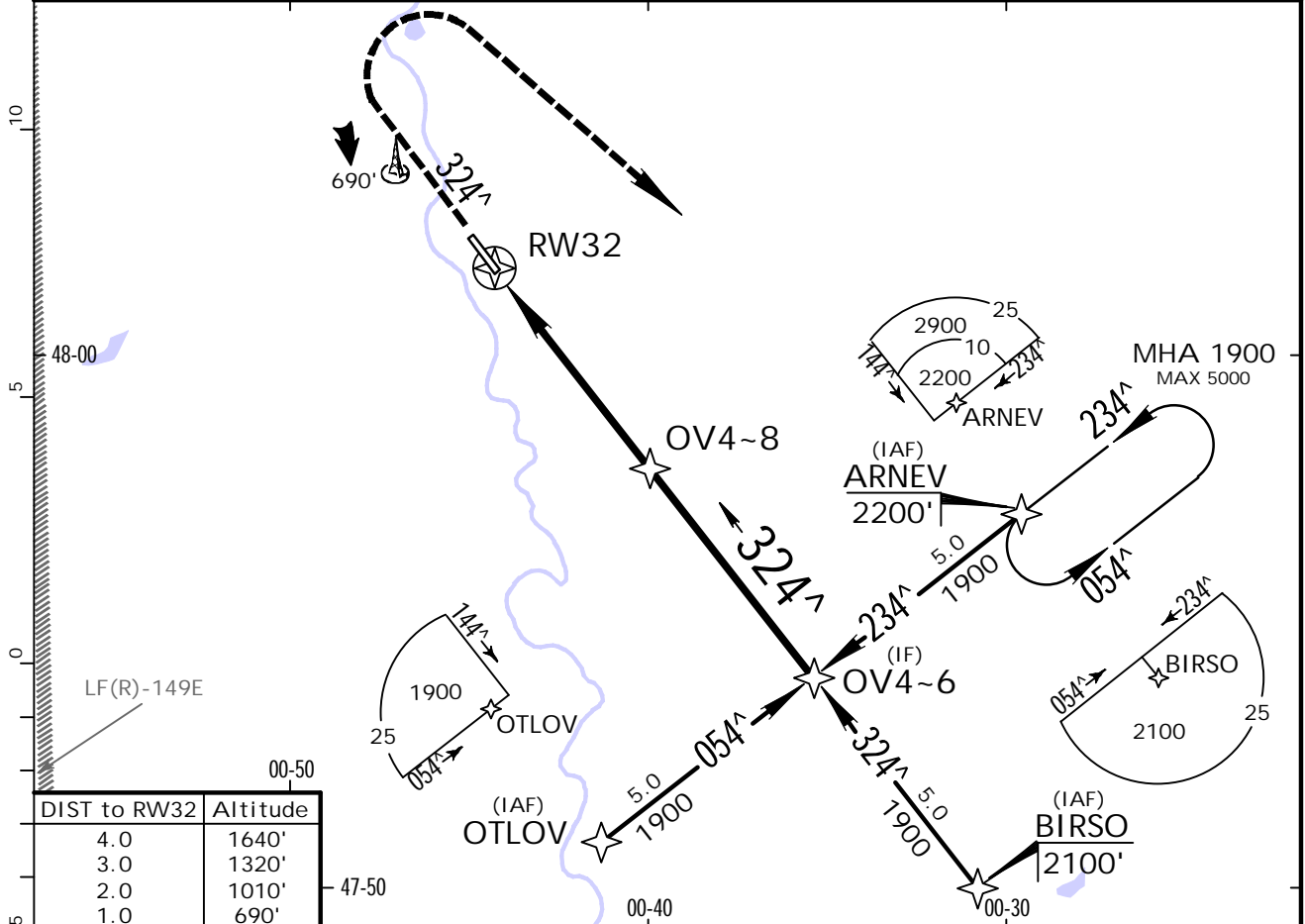


* ATIS RENNES 136.4		BREST Control 118.350		* LAVAL Information French only 119.3	
RNAV	Final Apch Crs 324 [^]	Procedure Alt OV4~8 1900' (1570')	LNAV DA/MDA(H) 670' (340')	Apt Elev 330'	TAA 25 NM IAF
MISSED APCH: Climb on 324 [^] to 1500', then turn RIGHT to ARNEV climbing to 2200'. Climb to 1500' prior to level acceleration.					
Alt Set: hPa Apt Elev: 12 hPa Trans level: By ATC Trans alt: 5000'					
1. If local ATS not available obtain RENNES altimeter setting from RENNES ATIS or BREST Control. 2. Pilot controlled lighting 119.3. 3. Outside LAVAL Info ops hr, A/A in French only.					



Gnd speed-Kts	70	90	100	120	140	160	REIL PAPI-L 1500' ↑ on 324 [^]
Descent Angle 3.00 [^]	372	478	531	637	743	849	
MAP at RW32							

	Standard. STRAIGHT-IN LANDING RWY 32		CIRCLE-TO-LAND		
	LNAV CDFA DA/MDA(H) 1670' (340')		W/o Local ATS & w/o Local Alt Set		
A	RVR 1500m	Max Kts	MDA(H)	VIS	
B		110	990' (660')	1500m	1170' (840') 1500m
C	NOT APPLICABLE	135	990' (660')	1600m	1170' (840') 1600m
D		C	NOT APPLICABLE		
		D	NOT APPLICABLE		

1 For add-on to the MDA(H), see ATC pages FRANCE.
CHANGES: Minimums. | JEPPESEN, 2009, 2014. ALL RIGHTS RESERVED.